

# Installation guide suitable for Hurford's Shou Sugi Ban

Thank you for purchasing Hurford's Shou Sugi Ban.  
Please read these instructions prior to installation.

Shou Sugi Ban is a complete cladding system, milled to comply with Australian Standards 2796 and design in both horizontal and vertical application.

*This document is intended as a guide only, and should be read in conjunction with the Building Code of Australia. It is advised that only qualified tradespeople with the relevant skill levels install this product. It is the installer's responsibility for the structural integrity and waterproofing of the building.*

**WARNING: MUST BE KEPT DRY PRIOR TO INSTALLATION**

Hardware required for installation of Hurford's SHOU SUGI BAN:

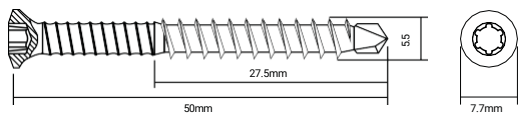
SIKAFLEX® 11FC+

Available from Sika stockists.

SCREW FIXING

Stainless Steel 304 Black Zinc Coated Screw 5.5x50mm

Drive TX20



Available to purchase from Hurford Wholesale Pty Ltd.

Preparation:

- » Check all weatherproofing precautions.
- Temporary Flashing – Required if rainfall is expected. Temporary waterproofing around any exposed end to ensure water doesn't enter the cavity behind the cladding is essential. If any water does get into the cavity this will cause problems such as cupping in the product.**

NOTE: ENSURE ALL PREPARATION WORK IS CARRIED OUT BEFORE INSTALLATION.

Installation:

- 1) Check frame is straight, studs are flush and have a maximum spacing of 450mm centres.
  - 2) Install vapour permeable sarking as per manufacturer's instructions.
  - 3) For vertical cladding Install – install cavity battens with a required minimum size of 70x35mm horizontality over sarking, with a maximum of 450mm centres, fixed into every stud. Cavity battens can also be installed for horizontal cladding installation as well to allow the timber to breathe. 70x35mm fastened at 450mm centres in line with the studs, over the sarking can help with long term durability.
  - 4) Install any waterproof corners, window, roof or any other type of flashings as per manufacturer's instructions.
  - 5) Mark out the board increments using a storey rod to ensure boards stay aligned.
  - 6) Install Shou Sugi Ban trims as per instructions. Refer to details in FIG 1 - 3.
- 1) Horizontal Cladding Install – starting at the bottom, ensuring a minimum of 100mm of ground clearance, begin cladding installation by fixing a starting board with the tongue edge facing up. Check board is level before fixing. Use a Stainless Steel 304 Black Zinc Coated Screw 5.5x50mm with a Drive TX20 to secret fix the board to the stud or cavity batten.
  - 2) Vertical Cladding Install – measure the width of the wall and calculate the required boards to be ripped (if any) to ensure you start and finish with a board of the same size. Starter boards will require a tongue and finishing boards will require a groove. Starting from the left with your starter board with a tongue, ensure that the tongue on the end match is facing up and the board is level fix with the Stainless Steel 304 Black Zinc Coated Screw 5.5x50mm with the Drive TX20 into the cavity batten.
- SEALING ALONG THE BOTTOM OF VERTICALLY INSTALLED CLADDING IS CRITICAL.

Diagram 1.

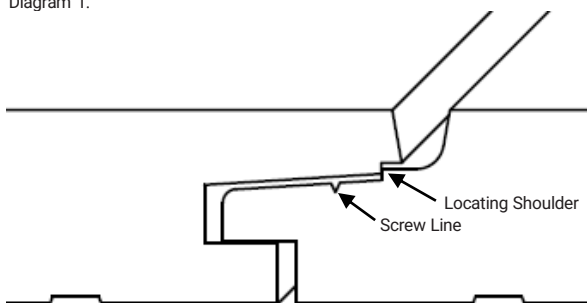
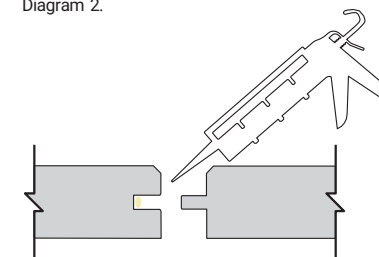


Diagram 2.



- 8) Shou Sugi Ban cladding boards are end matched, allowing for an end join between studs or battens. Apply a bead of sealant to the groove of the fixed board and slide the next board into place (see diagram 2), locking the boards together. Then secure the board onto the stud or batten. Scrape excess sealant off once dry. The micro bevel end-match also aids in directing water away from this join.
- 9) Continue installing the boards from the starter board. To allow the correct expansion between each board, use the locating shoulder engineered in the profile (see diagram 1).
- 10.) It is a requirement you coat any sawn cut ends during installation with Feast Watson Timber and Deck Stain, Black Japan.

Completion:

- » Install permanent capping immediately on completion of cladding installation.
  - » Ensure any gaps are sealed using Sikaflex or similar product.
  - » You MUST apply the second coat of finisher to the facade after installation
- Depending on the products drying time and specified number of coats a final coat may need to be applied.

Notes:

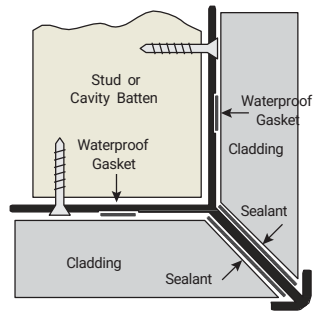
- » Timber generally expands through the width of the board and not the length, ensure boards butt up tightly.
- » If the cladding cannot be installed immediately, store in a dry protected area with the pack elevated on bearers.
- » Provide temporary capping during installation to prevent damage caused by wet conditions.
- » End Stop L Profile should not be used as an exterior horizontal wall flashing.

Design & Maintenance – Visit Hurford's website for design and maintenance points. Alternatively contact your local retailer or Hurford Wholesale office.

Again, thank you for purchasing Hurford's SHOU SUGI BAN.

[www.hurfords.com.au](http://www.hurfords.com.au)

FIG 1



Aluminium External Corner Stop (install prior to cladding)

- Screw the trim to the stud/cavity batten as per drawing.
- Peel the back off the supplied gaskets (23mm x 3mm) and fit to each side of protruding arm, as pictured. (This step can also be done before fixing the trim to the stud/cavity batten).

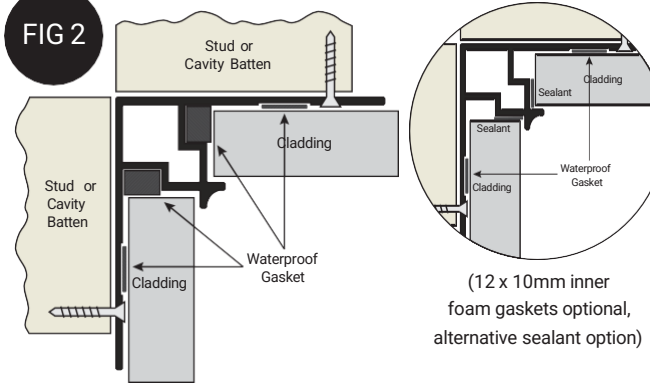
Or

Apply a bead of sealant in place of the foam gaskets; ensure enough sealant is used to create a moisture barrier. Scrap excess sealant off once dry.

- Cladding board will need to be mitred, ensure end grain is sealed.
- Fix cladding to stud/cavity batten allowing gaskets to compress; for sealant option compress sealant to form a 3mm thickness. Trim can flex slightly to allow the board to fit firmly against the protruding arm gasket.

*! Tip: When working on the second part of the interconnecting walls there won't be as much flex in the trim, so plan ahead and work out which side might not need the aided flex.*

FIG 2



Aluminium Internal Corner Stop (install prior to cladding)

- Screw the trim to the stud/cavity batten as per drawing.
- Peel the back off the supplied gaskets (12mm x 10mm) and fit to each inside corner cup, as pictured. (This step can also be done before fixing the trim to the stud/cavity batten).

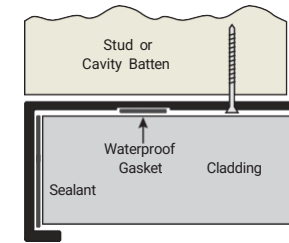
Or

Apply a bead of sealant to the instep as pictured; ensure enough sealant is used to create a moisture barrier. Scrap excess sealant off once dry.

- Cut the cladding boards to length, ensure end grain is sealed.
- Fix cladding to stud/cavity batten allowing gaskets to compress; for sealant option compress sealant to form a 3mm thickness.

*! Tip: Work from the inside corner out.*

FIG 3



Aluminium End Stop L (install prior to cladding)

- Screw the trim to the stud/cavity batten as per drawing.
- Peel the back off the supplied gasket (18mm x 3mm) and fit to protruding arm, as pictured. (This step can also be done before fixing the trim to the stud/cavity batten).

Or

Apply a bead of sealant to the arm as pictured; ensure enough sealant is used to create a moisture barrier. Scrap excess sealant off once dry.

- Cut the cladding board to length, ensure end grain is sealed.
- Fix cladding to stud/cavity batten allowing gaskets to compress; for sealant option compress sealant to form a 3mm thickness.